

From Plough to Plate by Plane

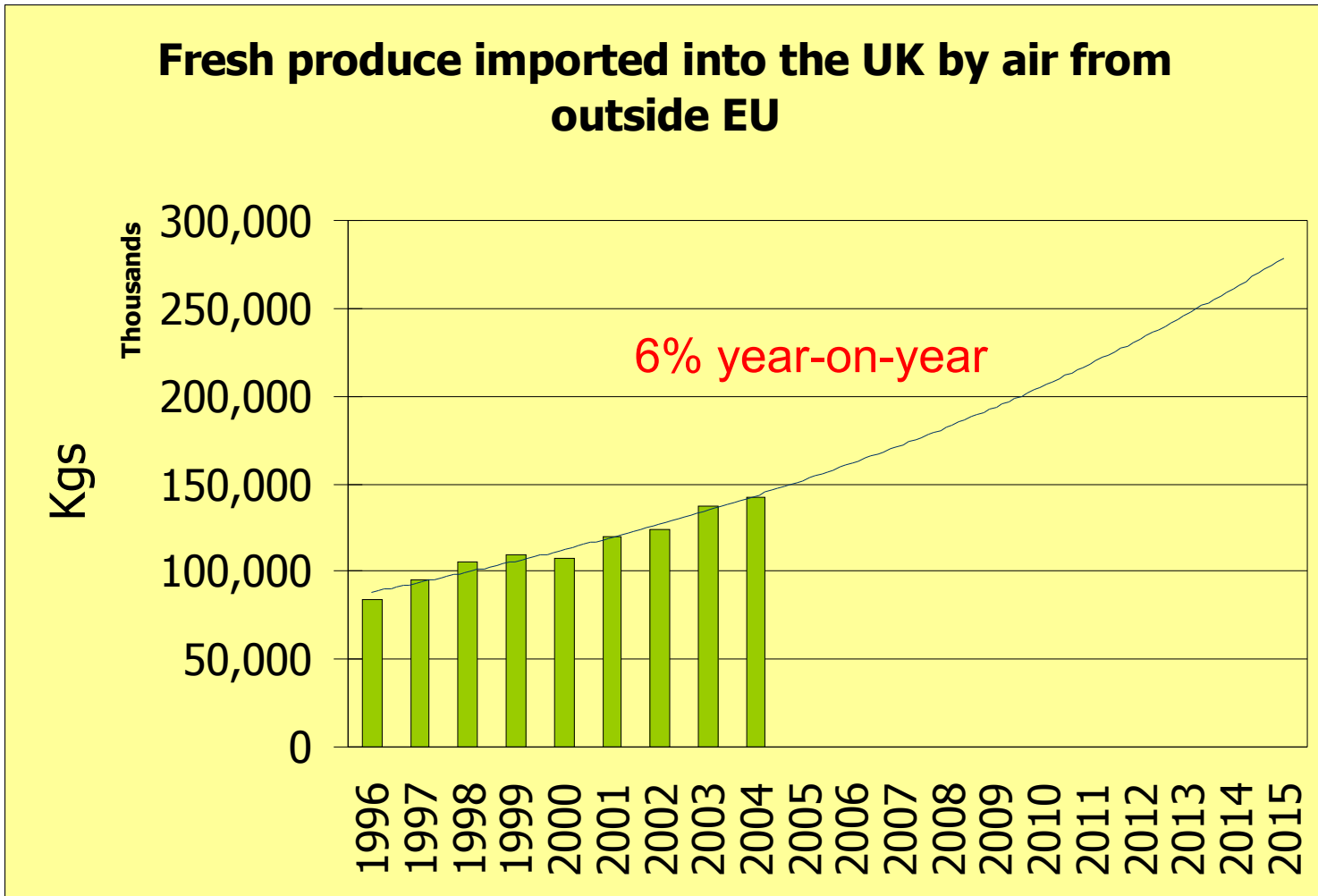
What are the trends in the air-transport of horticultural produce and what are the impacts?

Clive Marriott

University of Surrey/AgroFair



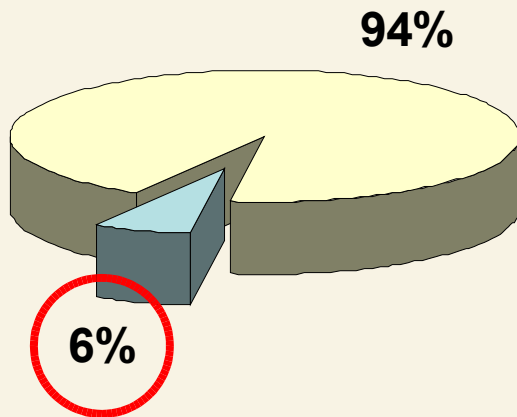
Rapid growth of airfreighted food



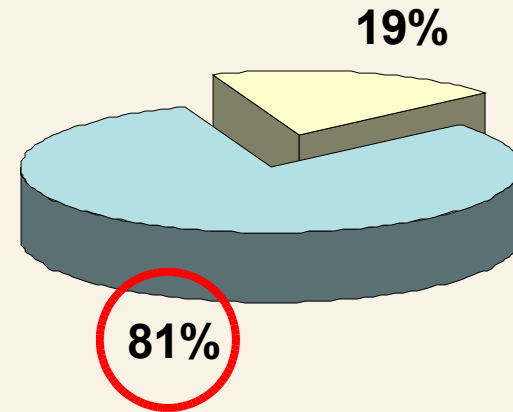


Climate change impact

Volume of non-EU fresh produce imports



CO₂ emissions arising from non-EU fresh produce imports

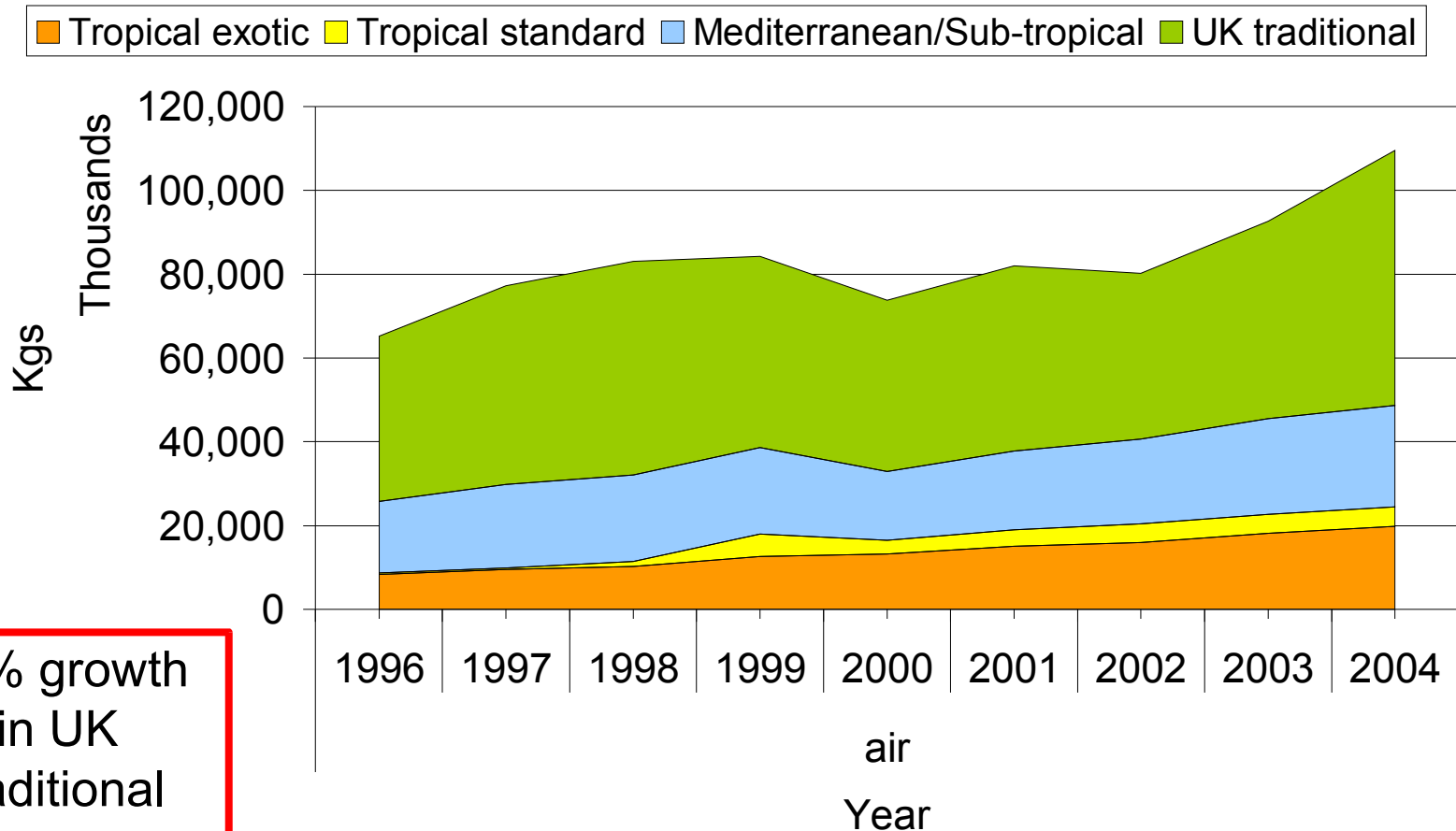


Year: 2004

Surface Air



Fresh produce imported by air into the UK from outside the EU – by type category





Commercial perspectives

✚ Airfreight led business case

▣ UK traditional

- Beans (3%)
- Asparagus (14%)
- Raspberries (22%)

▣ Sub-tropical/exotic

- Mangoes (6%)
- Pawpaws (27%)
- Babycorn (11%)

✚ Top-up trade

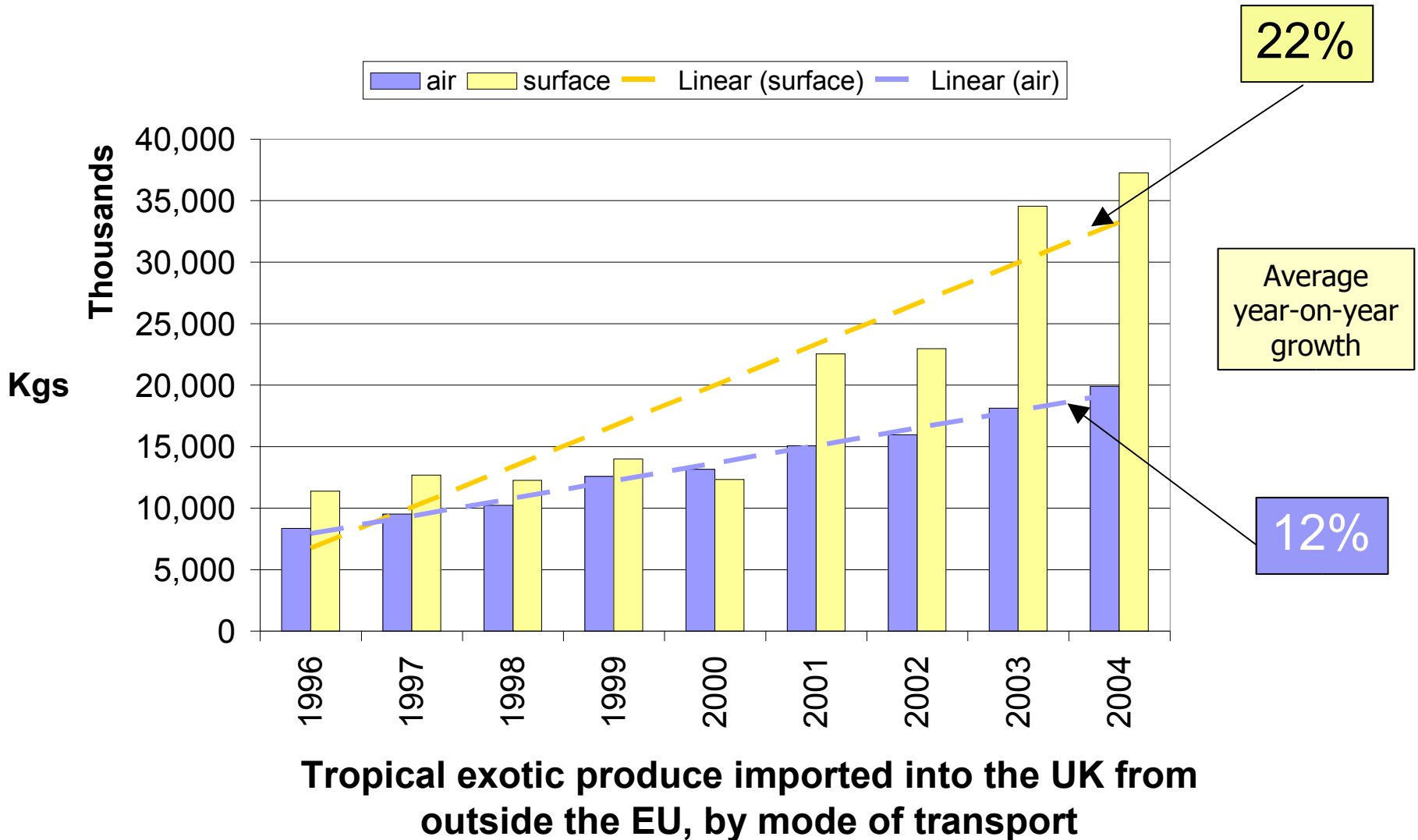
▣ UK traditional

- Apples (15%)
- Onions (7%)
- Brassicas (18%)

(average %age year-on-year growth trend)

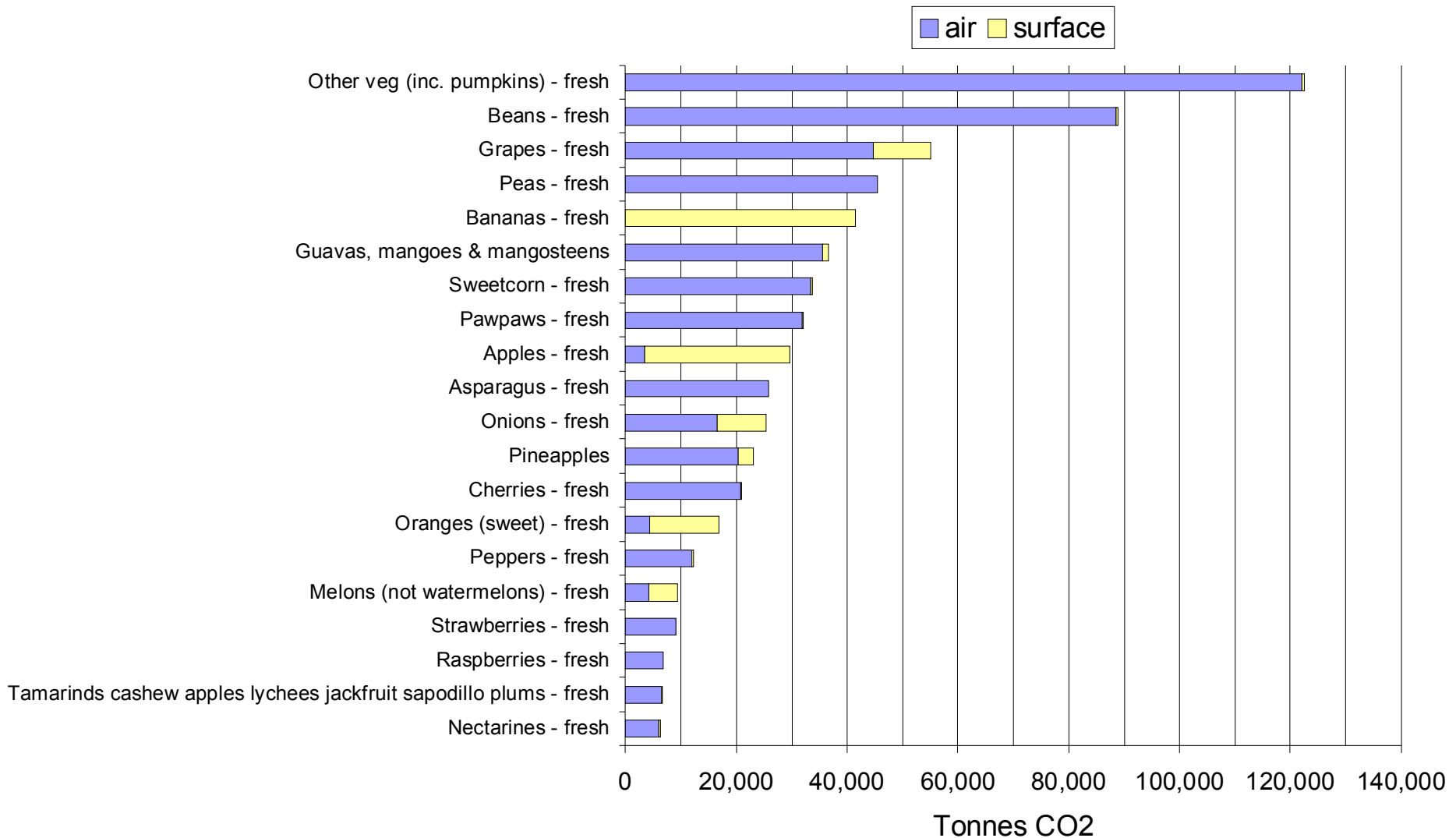


Shift to surface



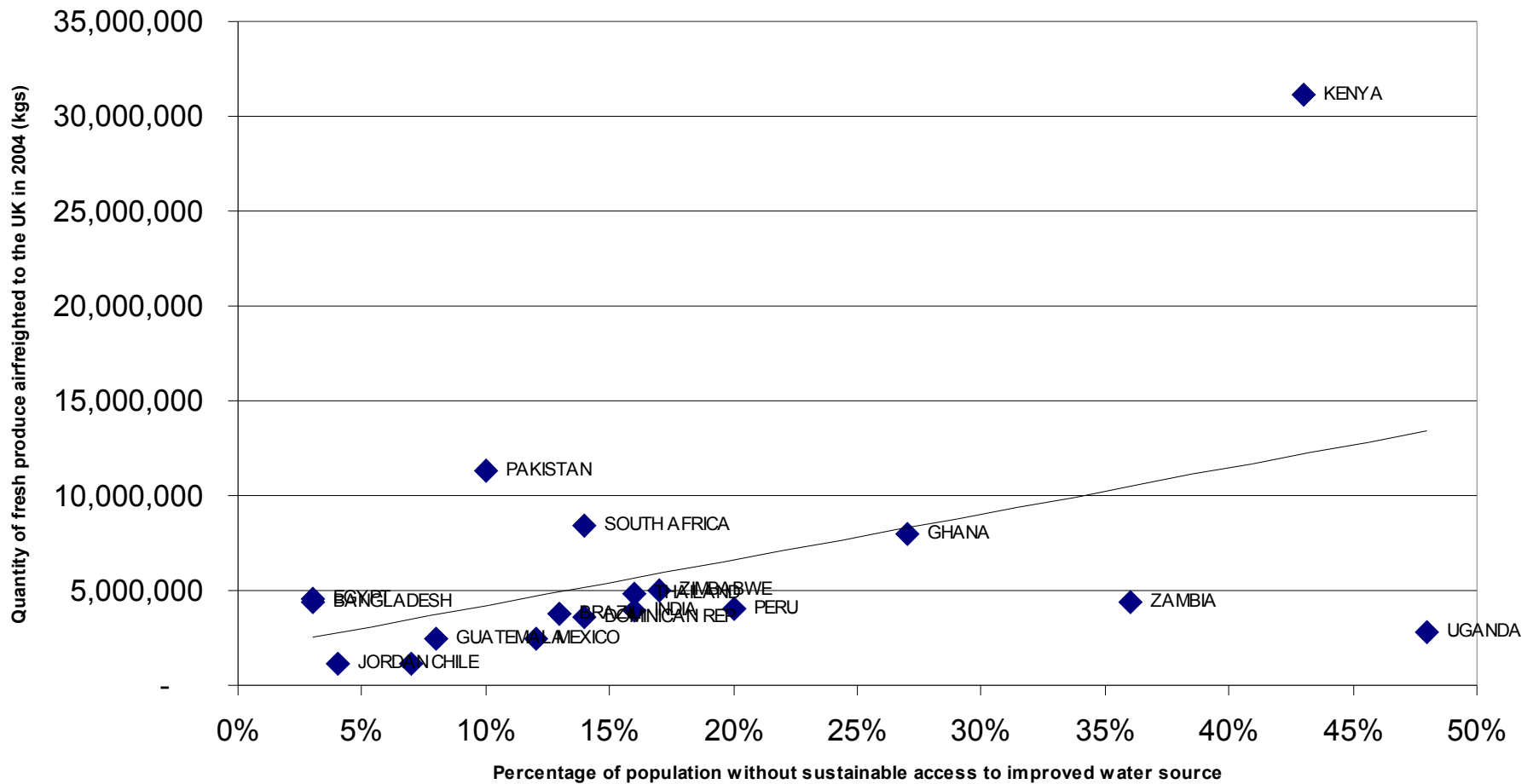


Top 20 product sources of import transport CO2 for fresh fruit & vegetables imported into the UK from outside EU in 2004 - by mode of transport and tonnes of CO2





Water issues





Emissions reductions? (1)

✚ Shopper's guide

FRUIT	Apple	Apricot	Banana	Bilberry	Blackberry	Blackcurrant	Blueberry	Cherry	Clementine	Cranberry
Argentina	Green	Red	White	Red	Red	White	Red	Red	Green	Red
Australia	Green	Red	Green	Red	Red	Red	Red	Red	Green	Red
Brazil	Green	White	Green	Red	Red	White	Red	Green	Green	Red
Canada	Green	White	White	Green	Green	White	Green	Red	White	Green
Chile	Green	Green	Green	Red	Red	White	Yellow	Green	Green	Yellow
Colombia	White	White	Green	Red	Red	Red	White	Red	White	White



Emissions reductions? (2)

- ✚ Internalise the environmental cost of airfreight
 - ✚ Food miles surcharge



250g green beans

83p + 2p “food miles surcharge”



From Plough to Plate by Plane

Clive Marriott

cjm@marriotts.org